



BEAUMONT CARE

Warm-Hearted Care, Your Way

Newsletter
KIPPA-RING



INSIDE THIS ISSUE:

June 2025

- From the Service Manager
- Staff Profile
- Welcome, Birthdays, Resident of the Month
- Life at Beaumont Care
- Helpful Links and Resources
- Calendar

BEAUMONT CARE KIPPA-RING

Service Manager:
Sukhjiwan Bajwa
(07) 3883 2475
111 George Street,
Kippa-Ring Qld 4021



www.beaumontcare.com.au/kippa-ring

FROM THE SERVICE MANAGER

Dear residents, staff and representatives/ visitors,
As we officially enter the winter season, we kindly remind all residents to ensure they have appropriate clothing and accessories to stay warm and comfortable. If you require any assistance or need to get in touch with your family regarding winter essentials, please don't hesitate to speak with our staff. We're here to help!

Wow—what an opening event! It was truly a huge success, and it brought so much joy to see our residents enjoying themselves. The new furniture and updated vibe in the front foyer have been a hit! Thank you to everyone who attended, helped, or simply brought their beautiful smiles and energy. The space already feels brighter and more welcoming because of you. Your presence made the day even more special. It was so uplifting to see the smiles on our lovely residents' faces as they explored the refreshed outdoor space.

Please rest assured that Beaumont Aged Care is committed every day to planning improvements and enhancing the environment you call home. Whether it's adding new furnishings, refreshing common areas, or creating events that bring us all together, we are always working to make Beaumont a more beautiful and comfortable place for you.

Thanks

Sukhji



STAFF PROFILE -

Name Mark Maloney

How long have you worked at Beaumont Care?

I have worked at Beaumont care for just over 3 Years.

What does your role entail?

I oversee maintenance, so I am responsible for fixing everything and anything and making Beaumont Care a safe environment.

What do you enjoy most about your role?

Seeing the smile on residents faces when I have fixed something that they cherish. I enjoy helping people and seeing the the final product being enjoyed.

What do you enjoy most about working at Beaumont Care?

Beautiful friendly staff and I like that everyone chips in when help is needed.

What is your dream holiday?

Going to the Bahamas and sitting on a nice sandy beach sucking on pina coladas

What is your favourite food?

It would have to be crumbed lamb cutlets

What is your favourite colour?

My favourite colour is mahogany.

What are your special interests?

Traveling my country towing a caravan

Do you have any pets? If so, tell us about them.

No I don't have any pets.



Welcome...

On behalf of all the
Beaumont Care family,
we warmly welcome

along with their family
and friends.

May BIRTHDAYS

Betty Palmer 5th
Verna Wright 4th
June Cheshire 7th
Peter Murphy 11th
Rex Mora 12th

*Happy
Birthday!*



GETTING TO KNOW OUR RESIDENTS



Margaret was born in Jakarta during the war. She came to Australia when she was 8yrs old.

Margaret worked as a secretary and owned a delivery business with her husband. Margaret was very proud of her ice-skating accomplishment; she ranked 2nd highest in Victoria.

Margaret enjoys singing, attending concerts, special events, trivia and is always happy to speak at special events and occasions.

Management and staff offer our deepest sympathy and
condolences to the family and friends of
Robert Johnson
Calvert Sundgren

LIFE AT BEAUMONT CARE

Mother's Day

Residents, family and staff all enjoyed Mother's Day with a high tea party at Kippa Ring. It was an extra special morning with family spoiling and spending time with their loved ones. There were plenty of sweets, savouries and special treats for all.



LIFE AT BEAUMONT CARE



LIFE AT BEAUMONT CARE



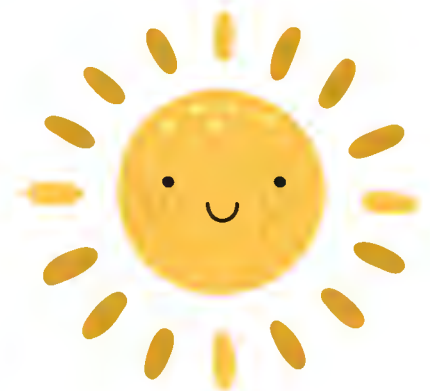
LIFE AT BEAUMONT CARE

Laughter Yoga has been added to the schedule for a delightful morning filled with fun and relaxation.



LIFE AT BEAUMONT CARE

THE GARDEN OPENING



LIFE AT BEAUMONT CARE



LIFE AT BEAUMONT CARE



LIFE AT BEAUMONT CARE



HAVE YOUR SAY

Beaumont Care is committed to providing high quality care and services.

We invite you to assist us by letting us know what we do well and what we need to adjust so that we can improve our performance. We respect the opinions of our clients and those who visit our residential services. Speak to us today or alternatively leave feedback in the comments, concerns and suggestions box. See below the following avenues that are available to provide feedback, ideas, opinions, comments and advice.

EMAIL

Service Manager: sukhjibajwa@beaumontcare.com.au
Clinical Nurse: cn-peninsula@beaumontcare.com.au
Executive Team: exec@beaumontcare.com.au

FEEDBACK FORMS

There are suggestion boxes located at the facility.
Feedback forms can be found alongside.

PHONE

Kippa-Ring Facility: (07) 3883 2475
Service Manager: 0457 755 660

ONLINE ELECTRONICALLY

Beaumont Care has an online 'feedback form accessible at
www.beaumontcare.com.au

NEWSLETTER / SURVEYS / GROUP EMAIL

Residents and their representatives are encouraged to participate in satisfaction surveys released bi-annually. Newsletter format has been updated to be more informative to enhance transparency with the changes expected within the aged care sector. Group emails are utilised on an as needed basis to disseminate information quickly to resident representatives.

GENERAL HOUSEKEEPING

Resident/family members bringing in food to place in fridges, these items need to be labelled with the resident's name. Please ask staff who can assist you in completing the required form to document expiry date etc. Please remember to let Admin office know if any of your details have changed so we have current information. Lost and found will be held monthly in the tv lounge, if you have lost any items of clothing please come along.

HELPFUL LINKS & RESOURCES

Aged and Disability Advocacy Australia 1800 818 338

Aged Care Complaints Commission 1800 550 552

Cultural Diversity in Australia www.culteraldiversity.net.au

Older Persons Advocacy Network 1800 700 660 www.opan.com.au

Palliative Care (08) 7221 8233 www.eldac.com.au

Human Rights Commission Queensland 1300 130 670 www.qhrc.qld.gov.au

Dementia Support Australia (02) 8437 7355 www.dementiacentre.com

Aged Care Quality & Safety Commission 1800 951 822 www.agedcarequality.gov.au

Advanced Care Planning 1300 007 227 www.advancecareplanning.org.au

Charter of Aged Care Rights www.agedcarequality.gov.au/resources/charter-aged-care-rights

Pain Management <https://www.betterhealth.vic.gov.au/health/conditionsandtreatments/pain-and-pain-management-adult>

Activity Program June – 2025					
Monday	Tuesday	Wednesday	Thursday	Friday	Saturday Sunday
30th 9am Chaplain visits 9.30am Exercises with Lisa 10.30am Trivia and Discussion with Jillian 10.30 1n1 room visits. 1pm Movie 1.30 Singalong in the Media room. 3pm Sensory Groups in the media room	3rd 9am Walking Group 9.30am Exercises with Lisa 10.30am Lawn bowls in the garden. 1pm Movie 1.30pm Bingo 1.30 Happy hour trolley 3pm Sensory Groups in the media room	4th Bus Outing 9.30am Maintenance Exercises 10am Catholic Church Service 10am Bus outing 10.30am Musical DVD 1pm Movies 1.30pm Room Visits 3pm Sensory Groups in the media room	5th 9am Morning news 9.30am Strengthening Group 10am Trivia & Discussions with Jillian 1pm Ice cream trolley 1pm Movie 1.30pm 1n1 visits- room side. 3pm Sensory Groups in the media room	6th Hairdresser 9am Walking Group 9.30am Exercises with Lisa 10am Tommy in concert 1pm Movies 3pm Sensory Groups in the media room	7th Saturday 9am Sunday 10am Gardening & Flower Arranging
2nd 9am Chaplain 1n1 visits 9.30am Exercises 10.30 Prayer group with Chaplain. 10.30am 1n1 room visits- guitar & singing. 1pm Trivia and Discussions with Jillian 3pm Sensory Groups in the media room	10th 9am Walking Group 9.30am Exercises with Lisa 10.30am Putt Putt golf in the garden. 1pm Movie 1.30pm Bingo session 1.30 Happy hour trolley 3pm Sensory Groups in the media room	11th Bus Outing 9.30am Maintenance Exercises 10am Bus outing 10.30am Catholic Parish church service 10.30am Personal Shopping 1pm Afternoon Movie 1.30pm Room Visits 3pm Sensory Groups in the media room	12h 9am Morning news 9.30am Strengthening Group 10am Laughter yoga 1pm Ice cream trolley 1.30pm 1n1 visits- room side. 3pm Media room- sensory, music and crafts. 5pm P	13th 9am Walking Group 9.30am Exercises with Lisa 10am Singing-choir with Darren 1pm Movie 1.30pm Sensory Groups in the media room	14h Saturday 9am Sunday 10am Gardening & Flower Arranging
9th 9am Chaplain visits 9.30am Exercises with Lisa 10.30am Trivia and Discussion with Jillian 10.30 1n1 room visits. 1pm Movie 1.30 Singalong in the media room 3pm Sensory Groups in the media room	17th Redcliffe Library Service 9.30am Exercises with Lisa 10.30am Putt Putt golf in the garden. 1pm Movie 1.30pm Bingo session 1.30 Happy hour trolley 3pm Sensory Groups in the media room	18th Bus Outing 9.30am Maintenance Exercises 10.30am Bus outing 10.30am Catholic Parish visit 10.30am Personal Shopping 1pm Afternoon Movie 1.30pm Joys gift shop 3pm Sensory Groups in the media room 5pm Pizza and Beverages.	19th 9am Morning news 9.30am Strengthening Group 10.30am Trivia and discussion group with Jillian. 1pm Ice Cream Trolley 1pm Movie 1.30pm 1n1 room visits 3pm Sensory Groups in the media room	20th 9am Walking Group 9.30am Exercises with Lisa 10am Painting- Art canvas 1pm Movie 1.30pm Sensory Groups in the media room	21st Saturday 9am Sunday 10am Gardening & Flower Arranging
16th 9am Chaplain visits 9.30am Exercises with Lisa 10.30am Residents meeting and food focus group 12pm Toasted sandwiches 1pm Trivia and discussions with Jillian. 3pm Sensory Groups in the media room	24th 9.30am Exercises with Lisa 10.30am Ball soccer in the garden. 1.30pm Bingo session 1.30 Happy hour trolley 3pm Sensory Groups in the media room	25th Bus Outing 9.30am Maintenance Exercises 10am Bus outing 10.30am Catholic Parish visits 10.30am Personal Shopping 1pm Afternoon Movie 1.30pm Room Visits 3pm Sensory Groups in the media room	26th 9am Morning news 9.30am Strengthening Group 10.30am Trivia and discussion group with Jillian. 1pm Ice cream trolley 1pm Movie 1.30pm 1n1 room visits 3pm Sensory Groups in the media room	27th 9am Walking Group 9.30am Exercises with Lisa 10am Harmony hour 1pm Movie 1.30pm Sensory Groups in the media room	28th Saturday 9am Sunday 10am Gardening & Flower Arranging
23rd 9am Chaplain visits 9.30am Exercises with Lisa 10.30am Trivia & Discussion with Jillian. 10.30 1n1 room visits- guitar & singing. 1pm Movie 1.30pm Room Visits 3pm Sensory Groups in the media room	31st 9.30am Exercises with Lisa 10.30am Putt Putt golf 1pm Movie 1.30pm Bingo session 1.30 Happy hour trolley 3pm Sensory Groups in the media room	32nd 9.30am Maintenance Exercises 10am Bus outing 10.30am Catholic Parish visits 10.30am Personal Shopping 1pm Afternoon Movie 1.30pm Room Visits 3pm Sensory Groups in the media room	33rd 9am Morning news 9.30am Strengthening Group 10.30am Trivia and discussion group with Jillian. 1pm Ice cream trolley 1pm Movie 1.30pm 1n1 room visits 3pm Sensory Groups in the media room	34th 9am Walking Group 9.30am Exercises with Lisa 10am Harmony hour 1pm Movie 1.30pm Sensory Groups in the media room	35th Saturday 9am Sunday 10am Gardening & Flower Arranging