



BEAUMONT CARE

Warm-Hearted Care, Your Way

Newsletter
KIPPA-RING



INSIDE THIS ISSUE:

April 2025

- From the Service Manager
- Staff Profile
- Welcome, Birthdays, Resident of the Month
- Life at Beaumont Care
- Helpful Links and Resources
- Calendar

BEAUMONT CARE KIPPA-RING

Service Manager:
Sukhjiwan Bajwa
(07) 3883 2475
111 George Street,
Kippa-Ring Qld 4021



www.beaumontcare.com.au/kippa-ring

FROM THE SERVICE MANAGER

Dear Residents, Families, and Friends,

What a bustling month March has been for our facility!

We are excited to announce that the much-anticipated refurbishment of our gardens commenced last month. Residents have been actively engaged in observing the transformation of our outdoor spaces, making it an enjoyable and interactive experience.

While we welcomed the positive changes in our gardens, we also navigated some challenges with cyclone warnings in the area. We are grateful to report that all our lovely residents and dedicated staff remained safe and sound throughout this period. Your safety and well-being are our top priority, and we appreciate everyone's cooperation during the alerts.

In staffing news, we want to inform you that Sharron, our beloved Clinical Nurse, is currently on a well-deserved break. We appreciate her hard work and dedication, and we look forward to welcoming her back refreshed. In the meantime, Daniel Opacic is stepping in as the acting Clinical Nurse. We are confident that Daniel will continue to provide the exceptional care that you all deserve.

Thank you for being a part of our vibrant community. We look forward to more updates as we progress with the garden refurbishment and other happenings.

Stay safe. Warm regards,

Sukhji

STAFF PROFILE - MARCO



Marco has been part of the Beaumont Care team for just over a year. In his role at Kippa-Ring, Marco looks after the residents, making them feel safe, secure and letting them know he is here to help

Marco gets most satisfaction out of knowing the residents are well looked after and putting a smile on their faces. He enjoys working together with the residents and staff around one common goal.

Marco's favourite colour is green, his favourite food is steak and he has a special interest in history. He enjoys looking back and comparing the past to today.

If he could go on his dream holiday, Marco would choose to visit New Caledonia and spend his days on the beach.

Welcome...

On behalf of all the
Beaumont Care family,
we warmly welcome

**Fred Evans
and
Wilma Lynch**

along with their family
and friends.

April BIRTHDAYS

Thomas Partos -27th
Robert Johnson -21st
Carole Martin - 29th

*Happy
Birthday!*



GETTING TO KNOW OUR RESIDENTS

Anne Dale

Anne was born in the Royal Brisbane Hospital and grew up in Stafford and Kelvin Grove.

She worked in the health industry with people with disabilities.

At Kippa-Ring, Anne enjoys being social, doing her crosswords and attends bingo weekly. She often wins a lot of prizes - Anne has a lot of luck! She also enjoys music and singing and spending time with her husband and family.



Management and staff offer our deepest sympathy and
condolences to the family and friends of

Allan Harries

LIFE AT BEAUMONT CARE

Residents celebrated St. Patrick's day with Irish stew, Irish cream mousse and green cupcakes. Due to the renovations and the dining room being closed, we had to postpone our planned entertainment with Darren to another date. Residents did have fun dressing up and taking part in an armchair session learning about Irish traditions and scenic destinations, dancing and singing.



LIFE AT BEAUMONT CARE

Arts and crafts



Throughout March, residents have been keeping busy engaging in meaningful activities that they enjoy doing.

Ursula has an interest in sewing and making paper flowers. Betty and Rona have enjoyed doing paper mache making large easter egg decorations, Margaret P is continuing with her canvas artwork, which is looking amazing. Godfrey has been doing a great job of painting part of a tree trunk for an art display for the media room.



LIFE AT BEAUMONT CARE

Music therapy



Music therapy is used to address physical, emotional, cognitive and social needs, helping residents improve their health and wellbeing. Music therapy uses sound, rhythm and harmony to achieve specific goals, such as reducing stress, improving communication and enhancing quality of life.

Music therapy is held weekly at Kippa-Ring. Catalina travels room-side with her guitar, singing and playing the residents' favourite songs that they all enjoy singing along to.



LIFE AT BEAUMONT CARE

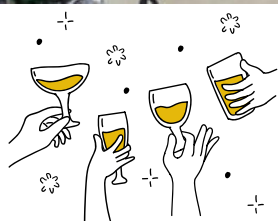
Memory card games can be beneficial for cognitive stimulation and recall, while also providing social interaction and a sense of accomplishment. Rex and Jan have been enjoying testing their memories and having a laugh.



Chaplain David joins us every Monday where he provides support to residents, runs prayer groups and conducts 1 to 1 room visits for interested residents.



LIFE AT BEAUMONT CARE



Bingo and happy hour is always a crowd pleaser!



Carole, Jan and Wilma
having a cuddle with the
therapy dolls.

LIFE AT BEAUMONT CARE



Exercise sessions have been focused around ball and balloon games this past month. Residents have been working hard and having fun and a laugh in the process.



HAVE YOUR SAY

Beaumont Care is committed to providing high quality care and services.

We invite you to assist us by letting us know what we do well and what we need to adjust so that we can improve our performance. We respect the opinions of our clients and those who visit our residential services. Speak to us today or alternatively leave feedback in the comments, concerns and suggestions box. See below the following avenues that are available to provide feedback, ideas, opinions, comments and advice.

EMAIL

Service Manager: sukhjibajwa@beaumontcare.com.au
Clinical Nurse: cn-peninsula@beaumontcare.com.au
Executive Team: exec@beaumontcare.com.au

FEEDBACK FORMS

There are suggestion boxes located at the facility.
Feedback forms can be found alongside.

PHONE

Kippa-Ring Facility: (07) 3883 2475
Service Manager: 0457 755 660

ONLINE ELECTRONICALLY

Beaumont Care has an online 'feedback form accessible at www.beaumontcare.com.au

NEWSLETTER / SURVEYS / GROUP EMAIL

Residents and their representatives are encouraged to participate in satisfaction surveys released bi-annually. Newsletter format has been updated to be more informative to enhance transparency with the changes expected within the aged care sector. Group emails are utilised on an as needed basis to disseminate information quickly to resident representatives.

GENERAL HOUSEKEEPING

Resident/family members bringing in food to place in fridges, these items need to be labelled with the resident's name. Please ask staff who can assist you in completing the required form to document expiry date etc. Please remember to let Admin office know if any of your details have changed so we have current information. Lost and found will be held monthly in the tv lounge, if you have lost any items of clothing please come along.

HELPFUL LINKS & RESOURCES

Aged and Disability Advocacy Australia 1800 818 338

Aged Care Complaints Commission 1800 550 552

Cultural Diversity in Australia www.culturaldiversity.net.au

Older Persons Advocacy Network 1800 700 660 www.opan.com.au

Palliative Care (08) 7221 8233 www.eldac.com.au

Human Rights Commission Queensland 1300 130 670 www.qhrc.qld.gov.au

Dementia Support Australia (02) 8437 7355 www.dementiacentre.com

Aged Care Quality & Safety Commission 1800 951 822 www.agedcarequality.gov.au

Advanced Care Planning 1300 007 227 www.advancecareplanning.org.au

Charter of Aged Care Rights www.agedcarequality.gov.au/resources/charter-aged-care-rights

Pain Management <https://www.betterhealth.vic.gov.au/health/conditionsandtreatments/pain-and-pain-management-adult>

Activity Program April – 2025

Monday	Tuesday	Wednesday	Thursday	Friday	Saturday Sunday
	1 st	2 nd Bus Outing	3 rd	4 th Hairdresser	5 th 6 th
	9.30am Exercises with Lisa 10.30 Easter crafts- Hats 1pm Movie 1.30pm Bingo 1.30 Happy hour trolley 3pm Sensory Groups in the media room	9.30am Maintenance Exercises 10am Bus Outing – Scenic Drive and swimming session. 10am Catholic Parish 10.30am Personal Shopping 1pm Movie- Musical 3pm Sensory Groups in the media room	9am Morning news 9.30am Strengthening Group 10am Trivia & Discussion Group 1pm Ice cream trolley 1pm Movie 2.30pm Room Visits 3pm Sensory Groups in the media room	9am Walking Group 9.30am Exercises with Lisa 10am Card games 1pm Movie 2.30pm 1on1 Gardening 3pm Sensory Groups in the media room	Saturday 9am BINGO Sunday 10am Gardening & Flower Arranging
	8 th	9 th Bus Outing	10 th	11 th Hairdresser	12 th 13 th
	9am Walking Group 9.30am Exercises with Lisa 10.30am Cooking Session- Mars bar balls. 1pm Movie 1.30pm Bingo 1.30 Happy hour trolley 3pm Sensory Groups in the media room	9.30am Maintenance Exercises 10am Catholic Church Service 10am Bus outing- RSL lunch and dancing. 10.30am Musical DVD 1pm Movies 1.30pm Room Visits 3pm Sensory Groups in the media room	9am Morning news 9.30am Strengthening Group 10am Trivia & Discussion Group 1pm Ice cream trolley 1.30pm Yoga Exercises 3pm Sensory Groups in the media room Aboriginal Dot Painting	9am Walking Group 9.30am Exercises with Lisa 10am Big Brass Band concert 1pm Movies 3pm Sensory Groups in the media room	Saturday 9am BINGO Sunday 10am Gardening & Flower Arranging
	14 th	15 th	16 th Bus Outing	17 th	18 th 20 th
	9am Chaplain visits 9.30am Exercises with Lisa 10.30am Trivia and Discussion group. 1pm Movie 1.30pm Easter hat crafts 3pm Sensory Groups in the media room	9am Walking Group 9.30am Exercises with Lisa 10.30am Easter Hat Parade. 1pm Movie 1.30pm Bingo session 1.30 Happy hour trolley 3pm Sensory Groups in the media room	9.30am Maintenance Exercises 10am Bus outing- Warrior Restaurant. 10.30am Catholic Parish visits 10.30am Personal Shopping 1pm Afternoon Movie 1.30pm Room Visits 3pm Sensory Groups in the media room	9am Morning news 9.30am Strengthening Group 10am Entertainment with Darren 1pm Ice cream trolley 1.30pm Thai Chi Exercises 3pm Sensory Groups in the media room	Saturday 9am BINGO Sunday 10am Easter Bunny visits
	21 st	22 nd Redcliffe Library Service	23 rd Bus Outing	24 th	25 th 27 th
Easter Monday	9.30am Exercises 10.30am Residents Meeting and Food Focus Group 12pm Toasted sandwiches 1.30pm Bingo session 1.30 Happy hour trolley 3pm Sensory Groups in the media room	9.30am Maintenance Exercises 10.30am Bus outing- Sandstone point hotel 10.30am Catholic Parish visit 10.30am Personal Shopping 1pm Afternoon Movie 1.30pm Room Visits 3pm Sensory Groups in the media room	9am Morning news 9.30am Strengthening Group 10.30am Anzac Day service- hosted by residents. 1pm Ice Cream Trolley 1pm Movie 1.30pm Yoga Exercises 3pm Sensory Groups in the media room	Anzac Day	Saturday 9am BINGO Sunday 10am Gardening & Flower Arranging
	28 th	29 th	30 th Bus Outing		
	9am Chaplain visits 9.30am Exercises with Lisa 10.30am Trivia & Discussion Group 10.30 1n1 room visits- guitar & singing. 1pm Movie 1.30pm Room Visits 3pm Sensory Groups in the media room	9.30am Exercises with Lisa 10.30am Laughter yoga 1pm Movie 1.30pm Bingo session 1.30 Happy hour trolley 3pm Sensory Groups in the media room	9.30am Maintenance Exercises 10am Bus outing- Mountain view café- Maleny. 10.30am Catholic Parish visits 10.30am Personal Shopping 1pm Afternoon Movie 1.30pm Room Visits 3pm Sensory Groups in the media room		



Please be advised that daily activities are subject to change due to resident preferences and choices, activities yet to be confirmed.